



# The Northern Ireland Scaling Accelerator



# What is the **scaling Accelerator?**

**The AmplifyNI Scaling Accelerator is an innovation support programme to rapidly accelerate the growth of new solutions to social problems in Northern Ireland. It is delivered by the Young Foundation and funded by the Department of Social Development.**

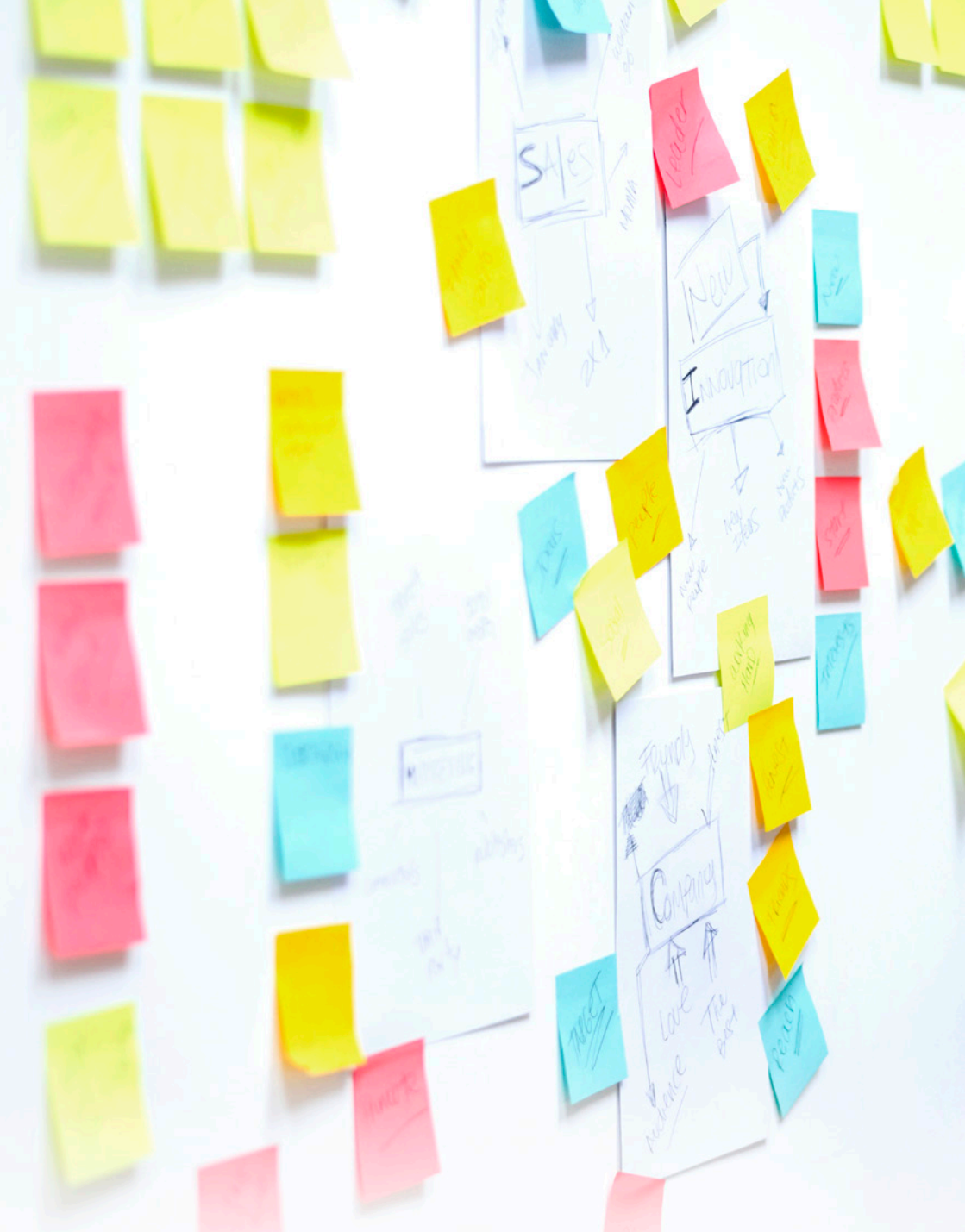
## **Our method**

We use a proven methodology to help social innovations become more impactful and sustainable.

We recruit ambitious teams who have developed an innovative idea, demonstrated it works and have delivered positive social impact.

## **We provide**

- 8 taught sessions on core aspects of your business model
- Strategic mentoring from industry experts
- Financial coaching from finance professionals
- Critical friend support from The Young Foundation and our partners
- Access to growth partners, funders and social investors



# Who are we **looking** for?

## **We are looking to support teams focussed on delivering social change in Northern Ireland through action on one or more of the following themes**

- Improving outcomes for disadvantaged young people
- Tackling drivers of household poverty and debt
- Increasing employment opportunities for people at high risk of worklessness
- Reducing inequalities in health and wellbeing

## **You may be**

- A social enterprise
- A campaign or social movement
- An innovative project within an existing voluntary, community, public or private organisation
- A strategic partnership



## **You will need to demonstrate in your application that the new solution you have developed**

- Is genuinely innovative
- Has the potential to achieve large scale impact on known social needs in Northern Ireland
- Has been tested at a small to medium scale and is ready to be scaled up over next twelve months\*
- Has a clear evidence-base drawing on existing evaluation of the innovation itself and /or relevant theory and research of what is known to work
- Is in a realistic position to access social finance within 12 months
- Is being developed by an organisation or partnership with an appropriate legal structure
- Has the explicit backing of the leadership of the organisations concerned

## **In addition shortlisted teams will also need to demonstrate at interview that you**

- Know the sector and communities you are working in and are close to the problem you are seeking to resolve
- Are committed to honest evaluation of the impact of your intervention
- Have sought the advice and expertise of sector professionals
- Are able to build support networks and have succeeded in bringing people on board
- Are hungry for support, good at listening, and keen to take advice on-board

\* For this programme we are primarily looking for innovations that have already achieved a turnover of £30,000, however we will also consider earlier stage innovations that are able to demonstrate an exceptional readiness to grow over the next twelve months.





## Our offer

**We offer 8 taught curriculum sessions, designed around 4 learning areas**

01

Building your business model

02

Developing your social impact

03

Understanding your market

04

Creating a financial model

### **We also offer**

Dedicated 1:1 support from the Young Foundation staff your **'critical friend'**

6 hours of **mentoring**

Up to 36 hours of financial **coaching**

Access to a **network** of funders, investors and future supporters

# How to apply

**You can hear more about the programme in person at 3 open day sessions**

**23.11.15 • 10:00**

**Belfast**

The Mac  
10 Exchange Street West

[view event](#)

**23.11.15 • 14:30**

**Londonderry**

10-14 Bishop Street  
BT48 6PW

[view event](#)

**24.11.15 • 10:30**

**Enniskillen**

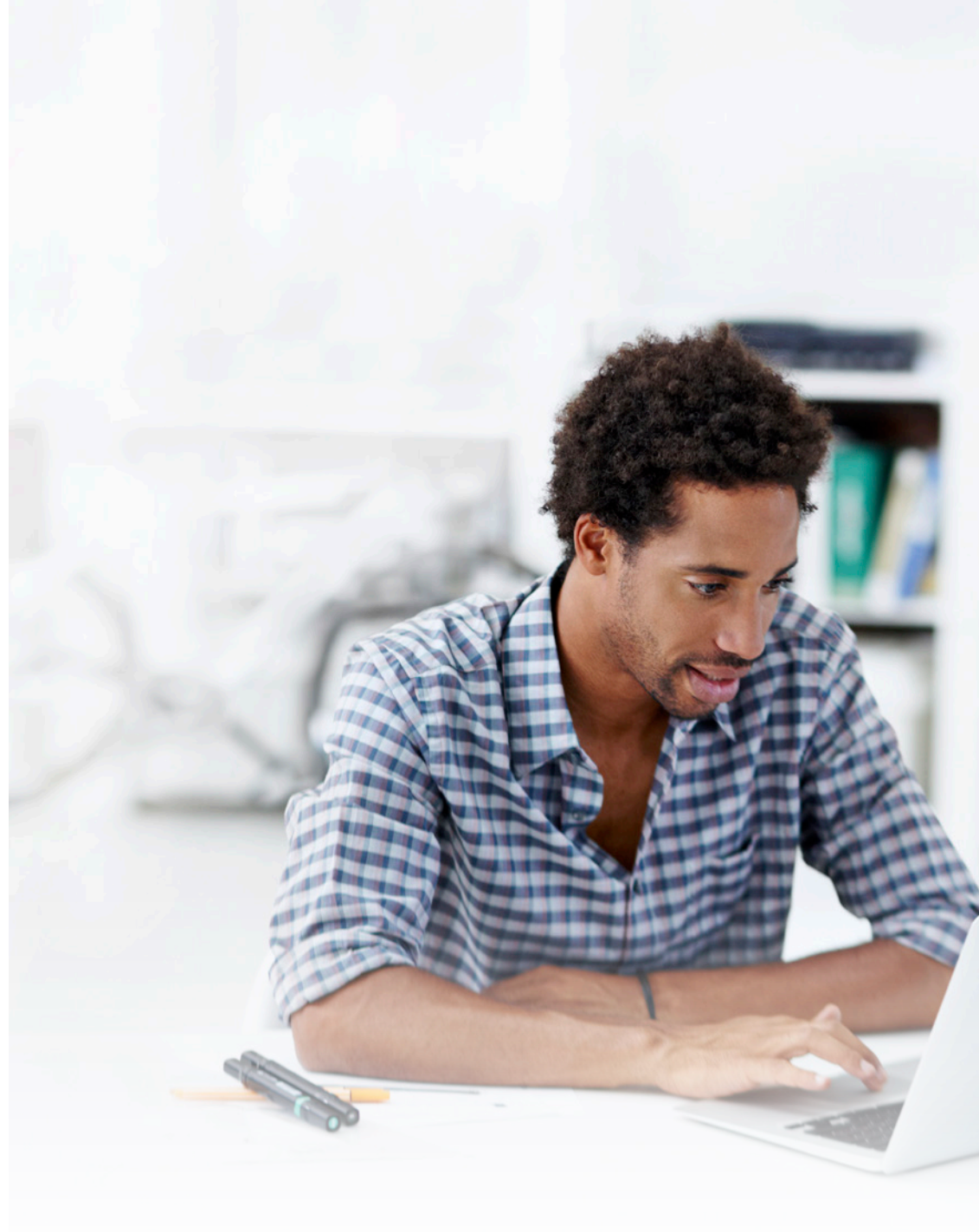
Fermanagh House  
Broadmeadow Place

[view event](#)

You can apply using our online application form, by registering and following the links at [www.growingsocialventures.org](http://www.growingsocialventures.org) or request an accessible word form by emailing [accelerator@youngfoundation.org](mailto:accelerator@youngfoundation.org) or call Claire on 07706 749 717

Deadlines for applications:  
12:00 7<sup>th</sup> December 2015.

If you are shortlisted, interviews will be held on 14<sup>th</sup> or 15<sup>th</sup> December 2015.





# Accelerator timetable — Northern Ireland

**17.12.15 • Lunch—early evening**  
Course induction

**14.01.16 • 10:00 –16:00**  
The social business  
model canvas

**15.01.16 • 10:00 –16:00**  
Demonstrating  
social value

**21.01.16 • 10:00 –16:00**  
Understanding  
your users  
Tools of service design

**22.01.16 • 10:00 –16:0**  
Winning work  
Understanding the public and private  
sector marketplace

**04.02.16 • 10:00 –16:00**  
Creating a financial  
model

**05.02.16 • 10:00 –16:00**  
Articulating social  
value

**25.02.16 • 10:00 –16:00**  
Project management  
and effective  
leadership

**26.02.16 • 10:00 –16:00**  
Reviewing your social  
business model  
canvas/pitch practice

**15.03.16**  
Demo day



@amplifyNI • amplifyNI@youngfoundation.org • www.growingsocialventures.org/NI